

NEPAL LIFE CAPITAL

WEEKLY

MARKET UPDATE

Week: (2025-4-13 to 2025-4-18)



Contents

Market Movement	1
Daily Turnover	2
Sub-Indices Performance	2
Daily Sector Movement	3
Investors Choice	4
Gainers and Losers	5
Technical Overview	7
Major Rates and Ratios	10
Upcoming Events	10

Market Movement

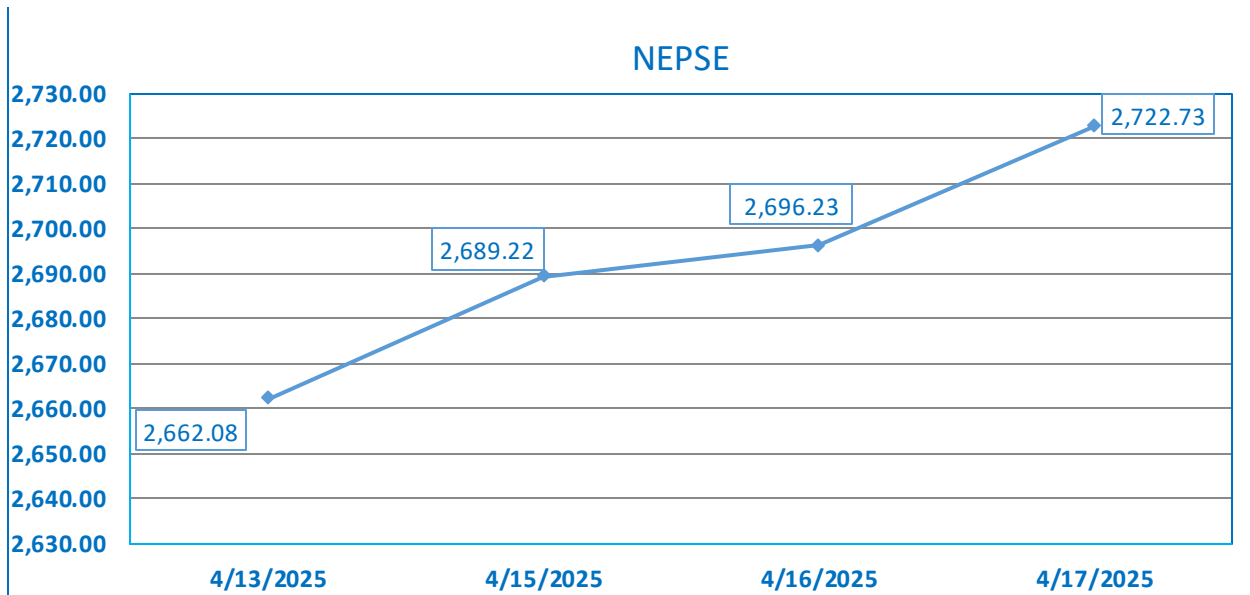


Figure 1: Market Movement for NEPSE index.

For the week of 13th April to 17th April, the NEPSE index traded with an average volume of 8.221 Arba rising 52.03 points (1.95%) to close at 2,722.73.

Daily Turnover

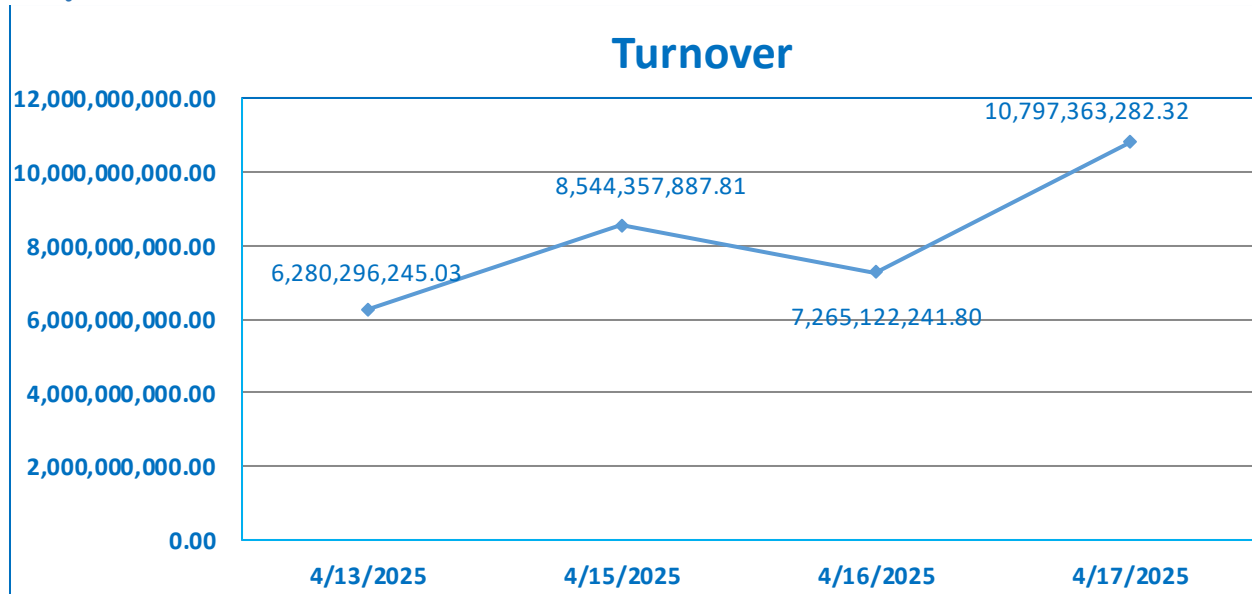


Figure 2: Turnover for NEPSE index.

The turnover for the current week has been displayed above.

Sub-Indices Performance

Indices	11th April	18th April	Return
Investment	109.37	117.24	7.20%
Development Bank	5,448.40	5,677.32	4.20%
Hydropower	3,445.77	3,577.66	3.83%
Non-Life Insurance	12,263.71	12,595.35	2.70%
Hotels and Tourism	6437.86	6590.39	2.37%
Banking	1,358.03	1,382.75	1.82%
Mutual Fund	19.29	19.52	1.19%
Life Insurance	13,271.93	13,416.76	1.09%
Microfinance	4,821.53	4,865.64	0.91%
Finance	2,548.34	2,567.31	0.74%
Manufacturing & Processing	7,074.88	7,093.20	0.26%
Others	2434.06	2412.13	-0.90%
Trading	4,655.55	4,558.54	-2.08%

Figure 3: Weekly Returns of Sub-indices.

Daily Sector Movement

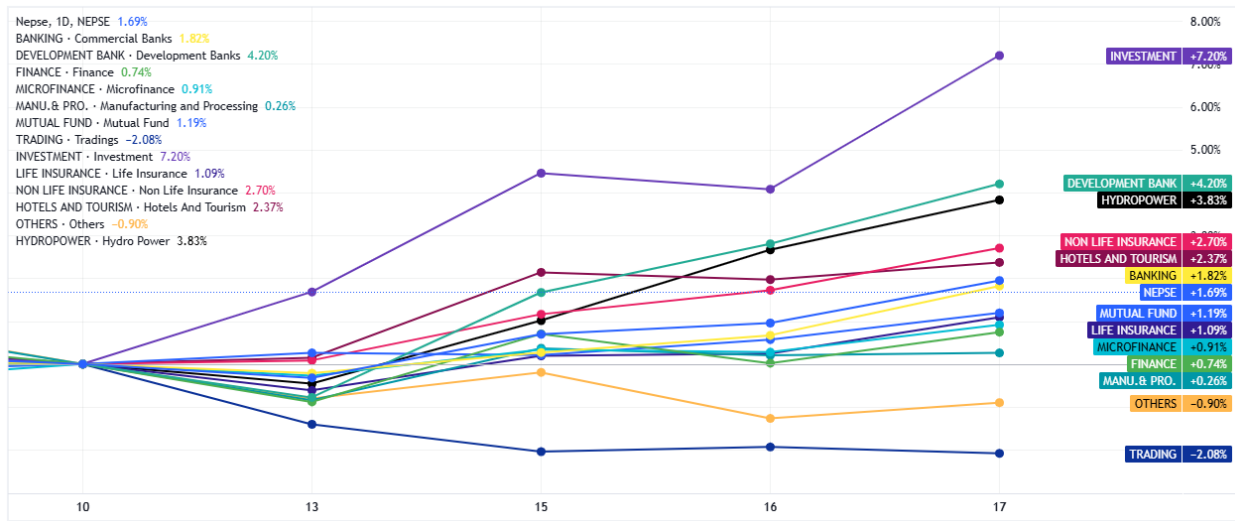


Figure 4: Daily sector movement relative to NEPSE index.

*Each dot represents the index closing point for each day of the week.

Investors Choice

In this section the stocks with the highest weekly trading volume have been showcased.

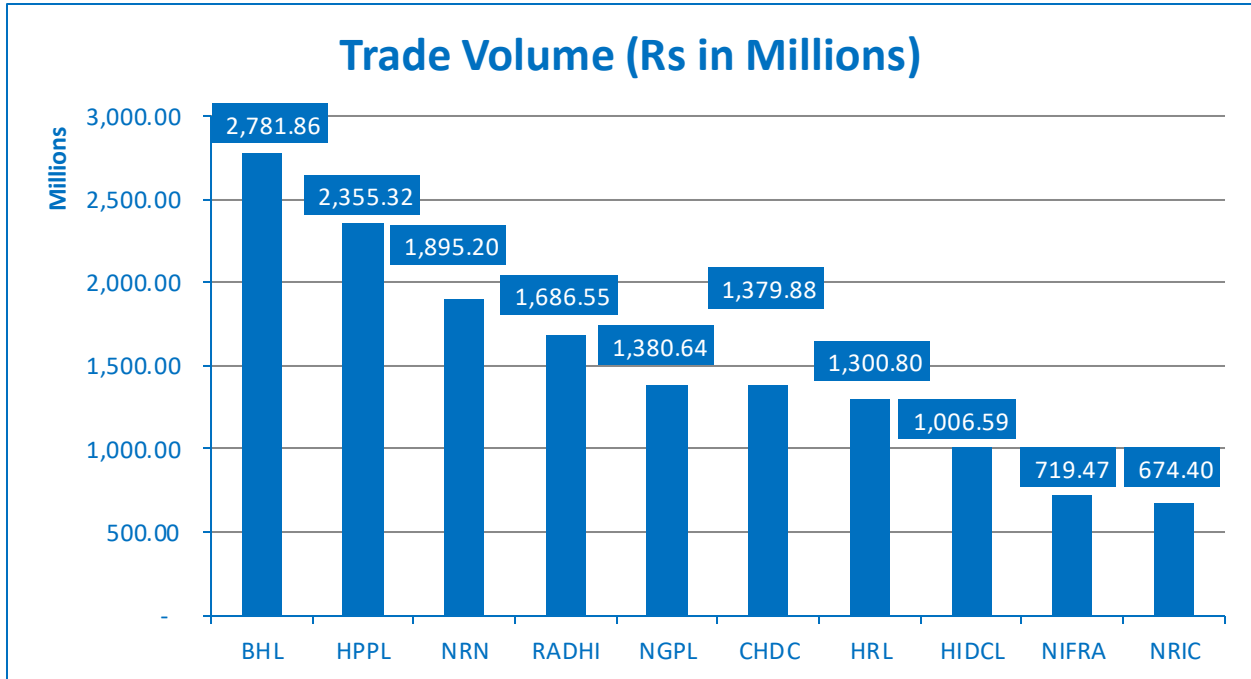


Figure 5: Top 10 Trade volume for the week.

Gainers and Losers

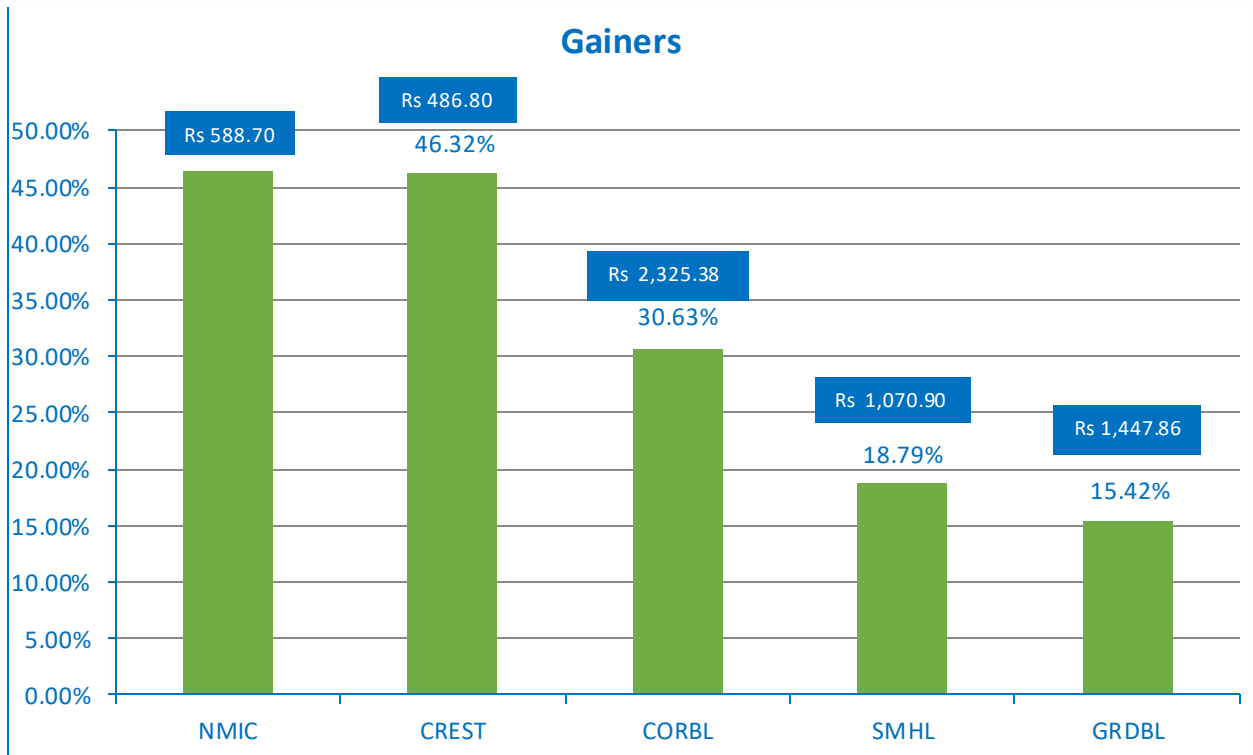


Figure 6: Top 5 Gainers for the week



Figure 7: Top 5 Losers for the week

Technical Overview

Overall Trend:

The NEPSE index has been trading within a broad sideways range for a considerable period, roughly since late 2024. Within this range, there's a more recent development of a short-term upward trend, characterized by the price action forming a rising channel. The index has shown a tendency to bounce off the lower trend line of this short-term channel, suggesting buying interest at those levels. However, the upward movements are currently contained below the resistance zone of 2770-2800.

MACD Indicator:

The Moving Average Convergence Divergence (MACD) indicator shows that the MACD line is currently above the signal line. This typically indicates bullish momentum. However, the histogram bars are showing a decrease in bullish momentum, which could be a sign that the upward momentum is weakening or consolidating.

RSI Indicator:

The Relative Strength Index (RSI) is currently above the 50 level, which generally suggests that the market has a positive momentum. Importantly, the RSI has recently bounced off a downward sloping trend line, which often precedes or confirms a potential upward price movement. This bounce in the RSI aligns with the price bouncing off the lower trend line of the short-term rising channel, reinforcing the short-term bullish outlook.

Overall Sentiment:

The overall sentiment appears to be cautiously optimistic in the short term, given the recent bounces off support levels and the positive readings on the MACD and RSI. However, the longer-term sideways consolidation suggests that there is no strong directional conviction yet. The decreasing bullish momentum on the MACD warrants attention, as it could signal a potential slowdown or reversal of the current upward move.

Key Takeaways:

Short-Term Bullish Bias: The rising channel and bounces off support, along with the positive RSI and MACD (although with weakening momentum), suggest a short-term upward bias.

Range-Bound Market: The broader price action indicates that the index is still within a larger consolidation phase, and any upward movement will likely face resistance.

Importance of Resistance: The 2770-2800 zone is a crucial resistance level. A sustained break above this could indicate a stronger bullish move.

Monitoring Support: The 2700-2720 and the more significant 2650-2670 levels are important support zones. A break below these could negate the short-term bullish outlook.

Indicator Divergence: The decreasing bullish momentum on the MACD while the price is still rising could be a potential divergence, which sometimes precedes a trend reversal. This needs to be monitored closely.

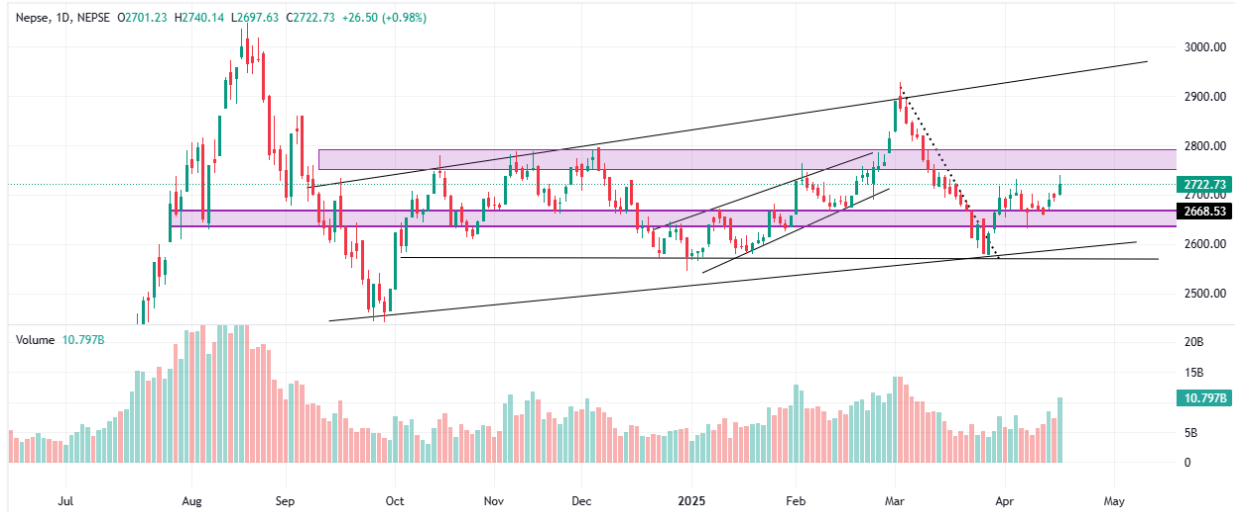
In conclusion, the NEPSE index is currently navigating a short-term uptrend within a longer period of sideways trading. While the indicators suggest some bullish momentum, traders should be aware of key resistance levels and the possibility of weakening momentum as indicated by the MACD. The overall direction will likely depend on whether the index can break out of the current short-term rising channel and the broader consolidation range.



Figure 8: Weekly Time Frame Candlestick Pattern



Daily analysis



Upward Rebound and Consolidation:

- Following the test of the 2600-2620 support, the index showed a **rebound**, breaking above a short-term downward trend line.
- The price action then entered a phase of **consolidation** within a tighter range, roughly between the support zone of **2650-2670** and the resistance level around **2720-2740**. This consolidation suggests a period of indecision in the market as buyers and sellers try to establish control.

Recent Bullish Momentum:

- In the most recent price action, the index has shown **bullish momentum**, breaking above the 2720-2740 resistance level.
- The last few daily candles are predominantly green, indicating buying pressure.

Further reaction and timing from the market shall reveal more about the current economic/ political situation.

Support	Resistance
Support 1: 2660	Resistance 1: 2800
Support 2: 2600	Resistance 2: 2850
Support 2: 2580	Resistance 3: 2900

Major Rates and Ratios

Description	As on	Rate/Ratio
CD Ratio	April 12, 2025	79.40
Weighted Average Interbank Interest Rate LCY	April 12, 2025	3.00%
Weighted Average 28 days T-bill rate	April 8, 2025	2.9682%
Weighted Average 91 days T-bill rate	April 8, 2025	2.9744%
Weighted Average 182 days T-bill rate	March 18, 2025	2.9857%
Weighted Average 364 days T-bill rate	April 8, 2025	3.0639%

Average FD Rate for the month of Baishak, 2081.

Institutional	Individual
4.37%	5.98%

Upcoming Events

Date	Events
4/20/2025	Opening Day of (25,00,000 units @ Rs.1000 per unit) "7% RBBL Debenture 2088" of Rastriya Banijya Bank Limited.
	Closing Day of 100 million units of Rs 10 face value each of "Reliable Samriddhi Yojana".
4/21/2025	Closing day of Auction of 40,000 units of Promoter shares of Saptakoshi Development Bank Limited.
	Opening Day of 3,97,169.30 units of Trade Tower Limited to the Foreign Nepalese Immigrants.
	Closing Day of ratio 1:1 Right Share of Dordi Khola Hydropower Company Limited.
4/22/2025	Closing Day of auction of Nepal Investment Mega Bank Limited for 8,50,000 units promoter shares.
	Closing Day of auction of NIC Asia Bank Limited for 7,14,950 units promoter shares.
4/23/2025	Closing Day of (25,00,000 units @ Rs.1000 per unit) "7% RBBL Debenture 2088" of Rastriya Banijya Bank Limited.
4/24/2025	Book Closure Date for 16th AGM of Swarojgar Laghubitta Bittiya Sanstha Limited.
	Book Closure Date for 8th AGM of Swabhimaan Laghubitta Bittiya Sanstha Limited.
	SGM of Time Pharmaceuticals Limited.

4/25/2025	Opening day of Auction of 43,779.52 units of Promoter Right Shares of Neco Insurance Limited.
	Opening day of Auction of 1,81,481.83 units of Ordinary Right Shares of Neco Insurance Limited.
4/26/2025	No event!

..... End.....

Disclaimer: The information on this document is provided for information purpose only. It does not constitute any offer, recommendation or solicitation to any person to enter into any transaction or adopt any hedging, trading or investment strategy, nor does it constitute any prediction of likely future movement in rates or prices or any representation that any such future movements will not exceed those shown in any illustration. Users of this document should seek advice regarding the appropriateness of investing in any securities, financial instruments or investment strategies referred to on this document and should understand that statements regarding future prospects may not be realized. Opinion, Projections and estimates are subject to change without notice. Nepal Life Capital Limited will not be liable for any losses arising out of this document.